

NOT FOR USE WHERE FAILURE CREATES A HAZARD TO HUMAN HEALTH OR SAFETY. ALL PRODUCTS ARE SUBJECT TO THIS FULL DISCLAIMER: <http://www.ihiconnectors.com/disclaimer.html>

FOR FURTHER INFORMATION ON THE PROPER USE OF THIS PRODUCT IN SPECIFIC APPLICATIONS SEE http://www.ihiconnectors.com/High_Amp_Wide_Trace_PCB_Wire_Connection.html
<http://www.ihiconnectors.com/Technical-Data-Installation.htm>
<https://lugsdirect.com/PDF Documents/5-16-SLOTTEDSCREW-BIT-RECOMMENDED-SPECS-IHICONNECTORS.pdf>

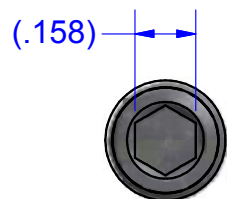
Schematic drawing covers:

B2A-2PCB

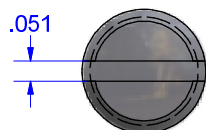
B2A-2PCB-HEX

/16-24 UNF - 2B

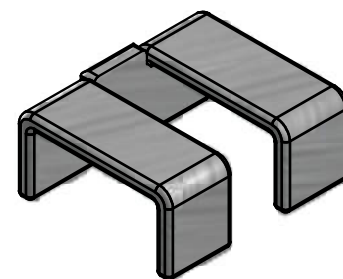
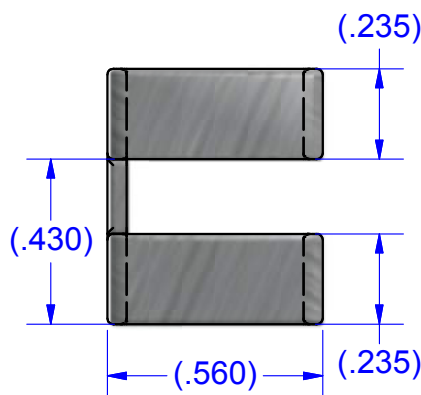
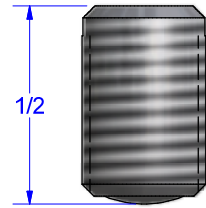
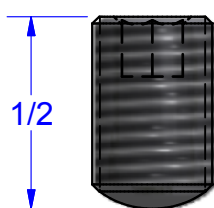
ALL SHOWN AT 2X ACTUAL SIZE



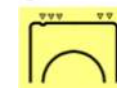
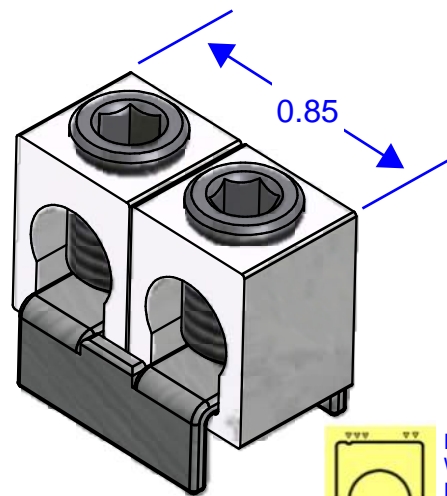
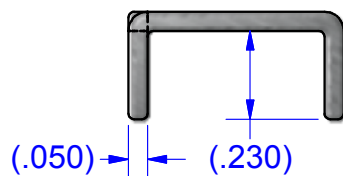
SCREW #12786-HEX
STEEL (ZINC PLATED)



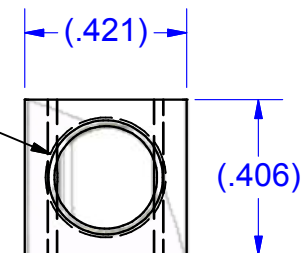
SCREW # 12786/15718/15720
STEEL (ZINC PLATED)



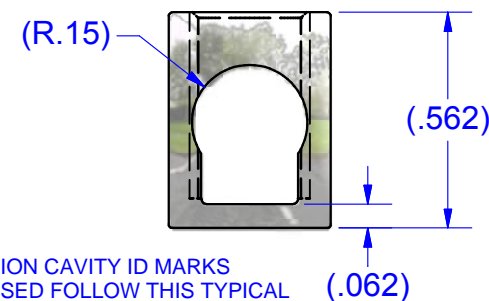
DUAL LUG STAPLE #PT2567
COPPER (TIN SOLDERABLE)



EXTRUSION CAVITY ID MARKS
WHEN USED FOLLOW THIS TYPICAL
PATTERN ON THE TOP OF THE PART



CONNECTOR #B2A
ALUMINUM (TIN PLATED)



PARTS MARKED

B2
IHI LOGO
CSA LOGO
UL RECOGNITION LOGO
2-14CU7
2-8AL7

CONDITIONS OF ACCEPTABILITY ARE
NOMINALLY PROVIDED BY THE TURN
PREVENT STAPLES OF MINIMUM
REQUIRED CROSS SECTION IN
CONJUNCTION WITH ADEQUATE PCB
STRUCTURE.

REVISION HISTORY				
REV	DESCRIPTION		DATE	APPROVED
1	INITIAL RELEASE		10/8/2012	TDS
<p>THIS DRAWING AND DESIGN ARE THE PROPERTY OF INTERNATIONAL HYDRAULICS, INC., CLEVELAND, OHIO, AND MAY NOT BE DUPLICATED, USED FOR THE BASIS OF DESIGN OR MANUFACTURE WITHOUT THE WRITTEN PERMISSION OF INTERNATIONAL HYDRAULICS, INC., CLEVELAND, OHIO.</p> <p>GENERAL TOLERANCES ±.015 (±0.038)</p>		INTERNATIONAL HYDRAULICS, INC.		
		TITLE: Connectors+Buss for PCB Mtg. ASSEMBLED CONNECTOR		
MATERIAL: SEE ABOVE		SIZE: TDS	DWG NO.: SEE ABOVE	REV: 2
FINISH:		DATE: 10/8/12 11/10/14		IHI CONNECTORS